

Preserving life's most cherished moments

*Capture Beauty
Keepsakes*



Handcrafted flower inclusion jewelry, rosaries, and keepsakes made from your special flowers.

Necklaces

These stunning sterling silver pendants in Traditional Capture Bead show off your flowers in vibrant color.

Each pendant comes on an 18-inch sterling silver box chain with a 2-inch extender.



Jeanie
Bead Cage
NJBC1
Measures
0.5" x 1" long

Tree of Life
NTOL1
Measures
1" diameter



Penny
Heart
NPH1
Measures
0.5" x 0.75"
long



Elizabeth
Heart
NSHE1
Measures
0.75" x 0.5"
long



Samantha
NSM2
Measures
0.75" diameter



Josephine
Cross
NJC1
Measures
0.75" x
1.5" long



Butterfly
Pendant
NBP1
Measures
0.5" x 0.75"
long



Dea
Bead Pendant
NDB1
Measures
0.75" long



Emma Round
Sterling Silver
Filigree
Necklace
NERF1
Measures
0.75" diameter



Angel
Pendant
NAP1
Measures
0.6" x 0.7" long

Stainless Steel Paul Crosses

The Paul Cross can be made in Traditional Capture Bead or Captured Clear. Each necklace comes on an 18" stainless steel rolo chain with a 2" extender.



Stainless Steel Paul Cross in Captured Clear
NCPICC
Measures 2" long

Stainless Steel Paul Cross in Traditional Capture Bead
NCPITCB
Measures 2" long

Stainless Steel Memory Lockets

These beautiful Memory Lockets come filled with tiny round and disk shaped Traditional Capture Beads, and crystal briolettes. Each necklace comes on an 18" stainless steel rolo chain with a 2" extender.



Memory Locket Heart
MLHRT1
Measures 1" long



Memory Locket Round
MLRND1
Measures 1.5" long

Sterling Silver Rings in Captured Clear



Nikee Ring
RNCCI

Available in sizes
5 - 9

Audrey Ring
RACCI

Available in sizes
5 - 9

Wendy Ring
RWCCI

Available in sizes
5 - 9

(enlarged for detail)

Necklaces

Choose Traditional Capture Bead or Captured Clear



Betty Pendant
with
Cubic Zirconia

NBPI-TCB
Measures 1" long



NBPI-CC



Marsha Pendant

NMB1-TCB



NMB1-CC
Measures 1" long

Shirley Bead Pendant



NSB1-TCB



NSB1-CC
Measures 0.5" long



Dolores Pendant

NDP1-TCB
Measures 1.75" diameter



NDP1-CC

Olivia Heart Pendant



NOHP1
-TCB
Measures 0.75" long



NOHP1
-CC



Elise Pendant
with
Cubic Zirconia

NEP1
-TCB
Measures 1" long



NEP1
-CC

Regan Heart Pendant
with Cubic Zirconia
"I love you for always and
forever"



NRHP1-TCB
Measures 0.75" long



NRHP1-CC



Cathy Pendant

NCP1-TCB



NCP1-CC
Measures 1" long

Gracie Cross Pendant



NGC1-TCB



NGC1-CC
Measures 1.25" long

Each pendant comes on an 18-inch sterling silver box chain with a 2-inch extender.

Necklaces in Captured Clear



Carlie Globe
Pendant
NCG1
Measures 5/8"

Eileen Teardrop
Pendant
NET1



*Measures
1.25" x 0.65"*

Cascading Hearts
Necklace
NCH1



*Measures
0.5" x 0.5"*

Pillar of Hope
Pendant
NPOH1



Measures 0.33" x 1.25"

Pillar of Love
Pendant
NPOL1



Measures 0.33" x 1.25"

Infinity Necklace
NINI



Measures 0.25" x 0.75"

Bracelets



Allie Heart Bracelet
BAH1

This stainless steel heart bracelet features your flowers in Captured Clear.



Infinity Bracelet
BIBCC
Sterling silver bracelet in Captured Clear.

Margie Bracelet
BMG1



This sterling silver adjustable bolo bracelet is elegant in its simplicity with a single Captured Clear Bead.

Bolo Curve Bracelet
BCB2



Choose the Filigree Heart Charm or the Tree of Life Charm to complete your bracelet.



Filigree Heart Charm
FHC

Tree of Life Charm
-TOL

Caroline Bolo Bracelet
BCAR1

Starring your special flowers in graduated Traditional Capture Beads, this sterling silver adjustable bolo bracelet is perfect with any outfit.

Jane Bracelet
BJN2

This beautiful bracelet is made up of alternating Capture Beads and tear drop crystals.



McKinley Bracelet
BMCK2

Features two sizes of Capture Beads interspersed with rose beads and small silver beads.



Beaded Charm Bracelet with Cross Charm
BBC1



Kennedy Catherine Bracelet
BKC1

Each Capture Bead is embellished with silver oxidized bead caps and Briolette crystals.



Madison Bracelet
BMN2

Alternating styles of Capture Beads separated by delicate chain links.

Our average beaded bracelet measures 7.5 - 8 inches and can be customized to fit you perfectly. Please indicate your size on the order form.

Sterling Silver Contemporary Charms



Small
CC2-S

Medium
CC2-M

Large
CC2-L

Jumbo
CC2-J

Captured Clear
CC2-CC

Contemporary Charms are handcrafted with a sterling silver core and fit the popular charm bracelet systems. Choose from Traditional Capture Beads or Captured Clear Beads. (Bracelet not included)

Traditional Charms easily attach to any charm bracelet or necklace with its sterling silver lobster clasp.



Traditional Charm
TC2

Stainless Steel and Leather Bracelets



Sierra Single Bead
Cord Bracelet
BSSC



Ben Hand Knotted
Bracelet
BHKB

Gerry Curve
Stainless Steel
Bracelet
BSSG1
Measures 9"

Our hand knotted bracelets feature our waterproof Captured Clear Beads and stainless steel accents. They are adjustable and can be made to fit any size wrist. All styles are available in your choice of leather, waxed cotton, or synthetic cord.



William Hand Knotted
Bracelet
BHKW

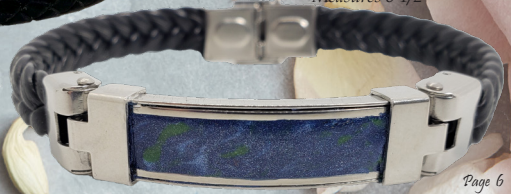


Megan Oval
Cord Bracelet
BMOC



James Bracelet
BSSLJ
Measures 8 3/4"

Tyler Bracelet
BSSLT
Measures 8 1/2"



Pocket Stones

Our Traditional Capture Bead pocket stones can be left smooth or embossed with a single large initial or up to 4 small letters.

Captured Clear Heart Shaped Pocket Stones



Pocket Stone
PS2
Measures Approximately
1.5 inches



CCHSPS1

These Captured Clear resin pocket stones show off your flower petals beautifully. Measures approximately 1.25 x 1.25 inches



Heart Shaped
Pocket Stone
HSPS1
Measures Approximately
1.75 x 1.75 inches



CCHSPS1

Caroline Pin CLP1

Measures Approximately
2 x 1 inch



Denny Golf Repair Tools

This useful divot repair tool has a removeable ball marker featuring your flowers in either Traditional Capture Bead or Captured Clear, and it can clip to your belt.

Denny Golf Tool
in Traditional
Capture Bead
DGTTCB1
Measures
3 1/4" x 2 1/8"



Denny Golf Tool
in Captured Clear
DGTTCC1
Measures
3 1/4" x 2 1/8"

Timothy Pocket Knife - **TPK1**
 This handsome slip joint folder has a high polished 440C flat ground blade.



Measures
 Open - 5.875" long
 Closed - 3.375" long

Judith
 Bookmark
JBM2



Mechanical
 Pencil
MP1

Russell Letter
 Opener
RLO1



Cuff Links
CFSS1

Also available in Captured Clear
CFSS1CC



Tie Bar
TB1

Lincoln Money Clip
 in Captured Clear
LMC1-CC



Measures 1" x 2"

Lincoln Money Clip
 in Traditional
 Capture Bead
LMC1-TCB



Stylus Pen
SP1

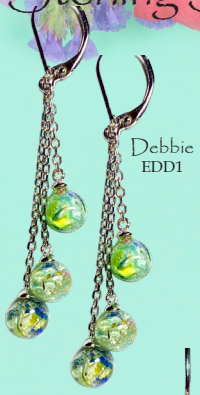
Twist Pen
TP1

Each item in our gorgeous Desk Set is handcrafted with your flowers and can be solid color or marbled with up to three colors. The Russell Letter Opener is 24kt gold plated. The pens and mechanical pencil are available in 24kt gold plate or chrome plate.

Tie Tack, Tie Bar, Cuff Links,
 and Lincoln Money Clip

These stainless steel gifts are a wonderful way for a gentleman to preserve a memory.

Sterling Silver Earrings



Debbie
EDD1



Open Filigree
Heart
EOFH1



Carlie Globe
ECG1



Jessica
in Captured
Clear
EJESS-CC



Suzanne
Hearts
ESH1



Tree of Life
ETOL1



Mary-Gen
EMG1-TCB



Jessica
in Traditional
Capture Bead
EJESS-TCB



Samantha
ESM2



Kathleen Swirl
EKS1



Lucy
EL1



Shirley Bead Posts
ES1



Eileen Teardrops
EET1

Key Rings



Secret
Compartment
Key Fob

SCKF2

This clever key fob has a secret compartment for matches, toothpicks, or a little emergency cash. Available in 24kt gold plate, or brushed silver hardware.



Round
Key Ring
KRR1

Double Heart
Key Ring



KRDH1

Gus Bottle Opener Key Ring



KRGBO1

This handy bottle opener has both form and function. Made of solid brass, and measures 3" long.

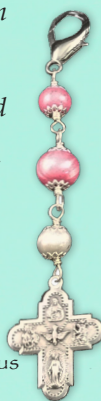
Initial Key Fobs

Captured Clear Initial
Fobs
CCIF1

each letter measures 1.625" tall



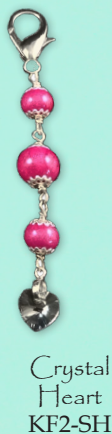
These beautiful initials have a stainless steel clasp that makes it perfect to adorn your purse or backpack.



Miraculous
Medal
KF2-MM



Bar Cross
KF2-BC



Crystal
Heart
KF2-SH

Matthew Hand
Knotted Key Fob

Our Matthew Hand Knotted Key Fob features stainless steel hardware and a single large Captured Clear bead or Traditional Capture Bead.



MHKKF
-CC

MHKKF
-TCB

Sun Catchers and Ornaments

Spire Snowflake
SFS1
Measures 3"



Diamond Snowflake
SFD1
Measures 3"



Snowflake Sun Catcher
SSC2
Measures 4"

Clara Sun Catcher
CSC1
Measures 3"



Mary Sun Catcher
MSC2
Measures 3.5"



George Sun Catcher
GSC2
Measures 3.5"



Joan Teardrop Ornament
in Traditional Capture Bead
TOJTCB1
Measures 3.25" x 2.125"



Joan Teardrop Ornament
in Captured Clear Resin
TOJCC1
Measures 3.25" x 2.125"



Judy Globe Ornament
JGO1
Measures 3"
Half Sphere

Wall Crosses

Floral Resin
Wall Cross
FRC1
Measures 5" x 3"



Celtic Wall Cross
with
Teardrop Dangle
CCWD1
Measures 5" x 3"

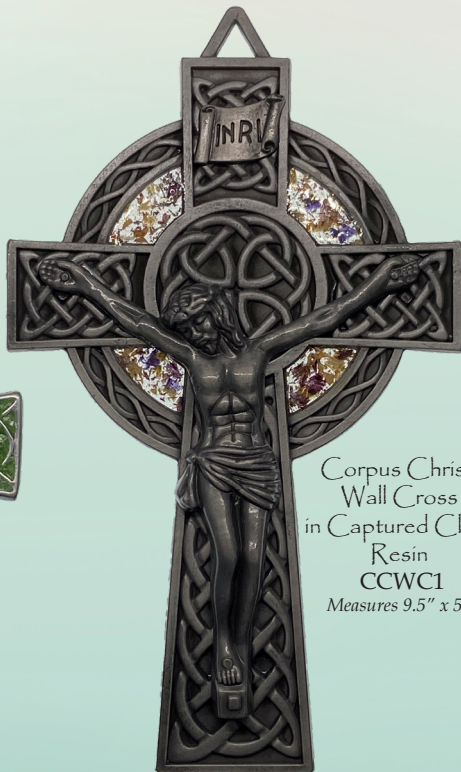


Optional Heart Dangle for the
Celtic Wall Cross
CCWHD1
Measures 5" x 3"

Celtic Wall Cross in
Traditional Capture
Bead
CCTCB1
Measures 5" x 3"



Corpus Christi
Wall Cross
in Captured Clear
Resin
CCWC1
Measures 9.5" x 5"



Visor Clips



St. Christopher
Visor Clip
SCVCI
Measures 2" x 3"

These visor clips for your car feature St. Christopher, the patron saint of travelers, and a Guardian Angel each backed with a Capture Bead flowers.



Guardian Angel
Visor Clip Single
VCGAI
Measures 2"



St. Christopher
Visor Clip Single
VCSCI
Measures 2"

Captured Clear Rosary and Chaplet

The Captured Clear Full Rosary and Chaplet are beautiful and durable keepsakes. Your flower beads are strung and hand knotted on nylon rosary cord and accented by stainless steel beads. They feature a St. Michael defeating Lucifer centerpiece and a rugged cucifix of nails.



Captured
Clear
Full Rosary
FRCCI



Captured
Clear
Chaplet
CCC1

Rosary Bracelet RB1

The Rosary Bracelet allows you to wear your faith on your wrist. Made with one full decade, one Our Father bead, and one Glory Be bead, and finished with an oxidized silver miraculous medal and a five-way medal.



Rosary
Bracelet
RB1

Chaplet C1

This is an abbreviated version of the Full Rosary. It is crafted with fifteen beads, a five-way medal, and a miraculous medal center. As with the Full Rosary, up to three colors can be used in its creation.



Chaplet
C1

Full Rosary FR2

The traditional Full Rosary features silver caps on each bead.

Rosaries can be made with one color or with up to three colors. If more than one color is selected, please let us know if you would like your beads marbled or alternating solid color beads.



Full Rosary
FR2



Pocket Rosary PR1

Our Pocket Rosary is a one decade rosary that can be conveniently carried with you. 1-1/2 inches in height.

At Capture Bead Keepsakes, it is our mission to capture a moment in time and allow you to hold it in your hand.

Through personal experience, we understand how cherished your flowers are and the meaning behind them. As your flowers arrive, the petals are carefully dried, processed and mixed with other ingredients, allowing us to make a durable, water resistant keepsake. Then each piece is lovingly formed, cured, and finished. Our designers then carefully handcraft your beautiful keepsake. The transformation from flower to keepsake has many steps. Our typical turn around time is approximately 8-10 weeks but may vary depending on the volume of orders received. Your patience during this process is greatly appreciated.

However you come to own a Capture Bead Keepsake, it is our hope that the beads bring you fond memories of the person or occasion for which it was created.

We appreciate you and are honored to create your memorial keepsakes.

Thank you for supporting our small business!

Deana Kerry & Kathy

View our complete line of products at:
www.CaptureBeadKeepsakes.com

DeanaMarieDesigns@gmail.com
(989) 708-8579, (989) 859-4733, (989) 573-0905

Please refer to the FAQs and Shipping Instructions on our website for more thorough information.

Handmade with pride in the U.S.A.